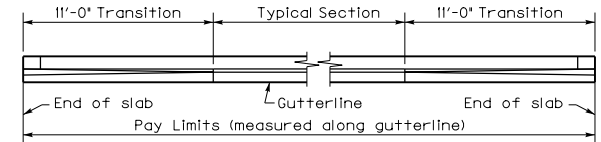


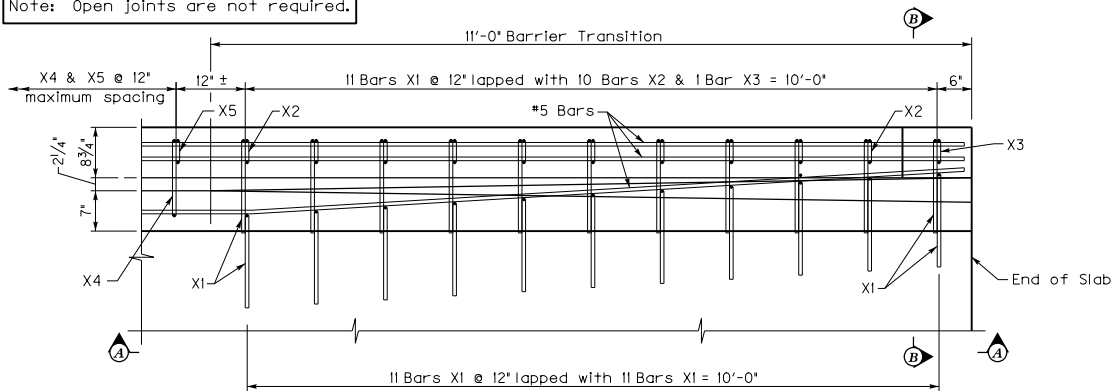
ELEVATION A-A



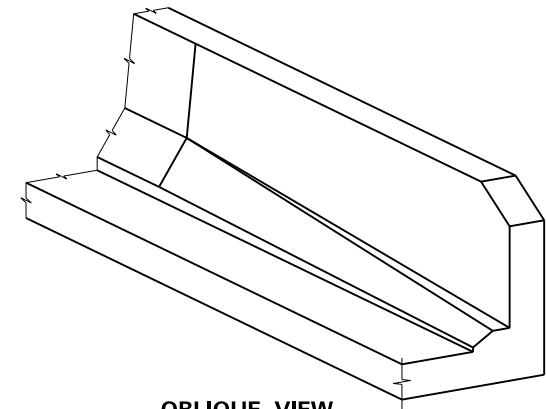
PLAN OF BARRIER

Note: X1 & X3 Bars at end of slab may be adjusted to maintain 2' minimum clearance on curved and skewed end bridges.

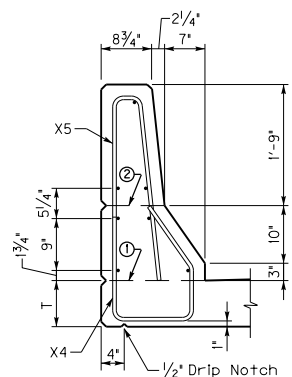
Note: Open joints are not required.



PLAN OF BARRIER TRANSITION



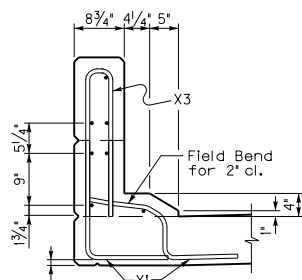
OBLIQUE VIEW



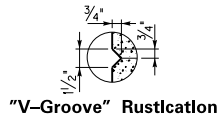
TYPICAL BARRIER SECTION

① Mandatory roughened construction joint. Concrete above this joint is to be placed after slab has been properly cured and included in the bid for Rail System, Type 3.

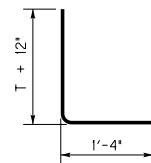
② Permissible construction joint. "V-Groove" rustication joint is required if construction joint is used. 1/4" open joints are not required.



SECTION B-B

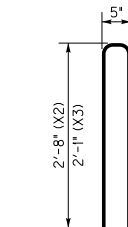


"V-Groove" Rustication



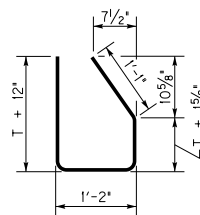
X1(e) Bars

#5 Bar



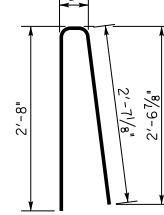
X2(e) & X3(e) Bars

#5 Bar



X4(e) Bars

#5 Bar



X5(e) Bars

#5 Bar

General Notes

CONCRETE: Use Class AA Concrete throughout.

OPTIONAL WELDED WIRE REINFORCEMENT:

At the contractor's option, deformed welded wire reinforcement (WWR) in accordance with ASTM A497 and epoxy coated in accordance with ASTM A884 may be used in place of stirrup bars X2, X3, and X5 as well as the straight or longitudinal reinforcement attached to these stirrups. Use size D31 wire for both stirrups and straight reinforcement. Locate and space the wire reinforcement the same as the conventional reinforcement except lower the top straight bar at least 2 1/2' away from the bend in the stirrup. Use a minimum 2'-8" lap for the straight reinforcement between sheets of WWR.

MEASUREMENT: The linear foot bid for the barrier is measured along the roadway gutterline. Include all reinforcement shown and all concrete above the top of slab in the bid item for Rail System Type 3.

REINFORCEMENT: All reinforcement shown on this sheet is to be epoxy coated. Use stirrup bend diameters for all bent bars. Straight reinforcement is to be Size #5 and lapped 2'-2' when necessary.

**KENTUCKY
DEPARTMENT OF HIGHWAYS**

RAIL SYSTEM TYPE 3

STANDARD DRAWING NO. BHS-008-02

SUBMITTED *Mad. Wite* 12-01-15
DIRECTOR, DIVISION OF STRUCTURAL DESIGN DATE

APPROVED *[Signature]* 12-01-15
STATE HIGHWAY ENGINEER DATE